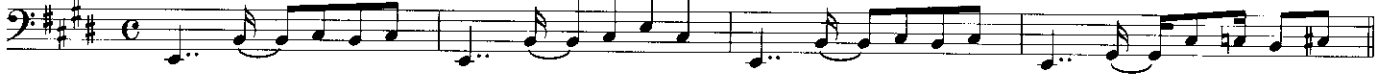


WHAT'S GOING ON

From the
1971 Marvin Gaye album
What's Going On

Words and music by
MARVIN GAYE, ALFRED CLEVELAND
& RENALDO BENSON

♩=102 INTRO Emaj⁷



VERSE 1 Emaj⁷ C#m⁷



Emaj⁷ C#m⁷



F#m⁷ A/B B⁹



VERSE 2 Emaj⁷ C#m⁷



Emaj⁷ C#m⁷



F#m⁷ A/B B⁹



F#m⁹ Amaj⁷/B F#m⁹



Amaj⁷/B F#m⁹ Amaj⁷/B B⁹



CHORUS 1 Emaj⁷ C#m⁷ Emaj⁹ C#m⁷



BRIDGE Am⁹



A/B

Emaj7 C#m7 C#m9

Emaj7 C#m9

F#m9 A/B B9

F#m9 Amaj7/B F#m9

Amaj7/B F#m9 Amaj7/B B9

CHORUS 2 Emaj7 C#m7 Emaj7 C#m7

BRIDGE Am9

A/B

Am9

A/B FADE OUT

Detailed description: This is a bass line musical score for the second page of 'What's Going On'. The music is written in bass clef with a key signature of three sharps (F#, C#, G#). The score consists of ten staves of music. The first staff is labeled 'A/B'. The second and third staves have chord markings 'Emaj7', 'C#m7', and 'C#m9'. The fourth staff has 'F#m9', 'A/B', and 'B9'. The fifth staff has 'F#m9', 'Amaj7/B', and 'F#m9'. The sixth staff has 'Amaj7/B', 'F#m9', 'Amaj7/B', and 'B9'. The seventh staff is labeled 'CHORUS 2' and has 'Emaj7', 'C#m7', 'Emaj7', and 'C#m7'. The eighth staff is labeled 'BRIDGE' and has 'Am9'. The ninth staff is labeled 'A/B' and the tenth staff is labeled 'A/B' and 'FADE OUT'. The music features a mix of eighth and sixteenth notes, often beamed together, and rests.