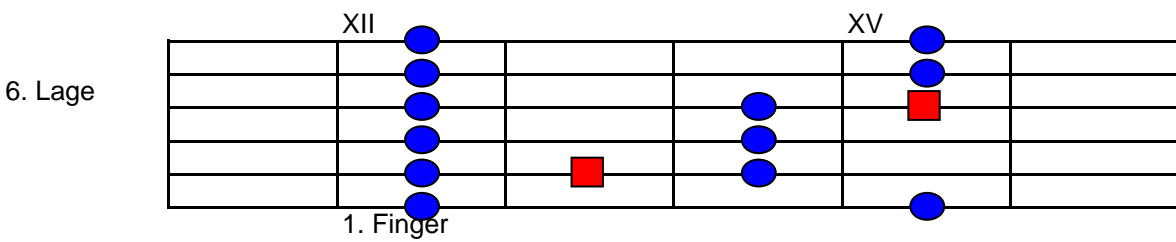
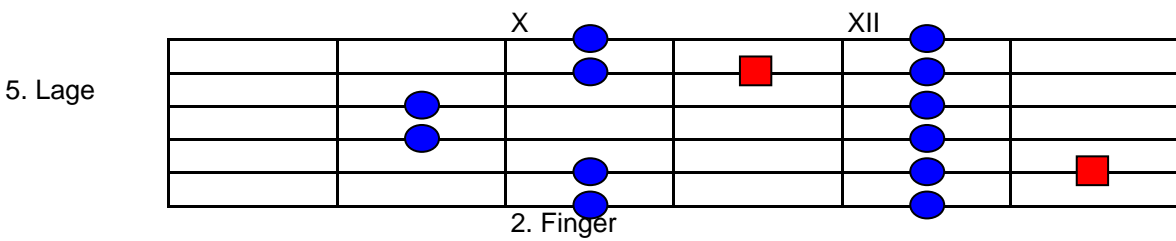
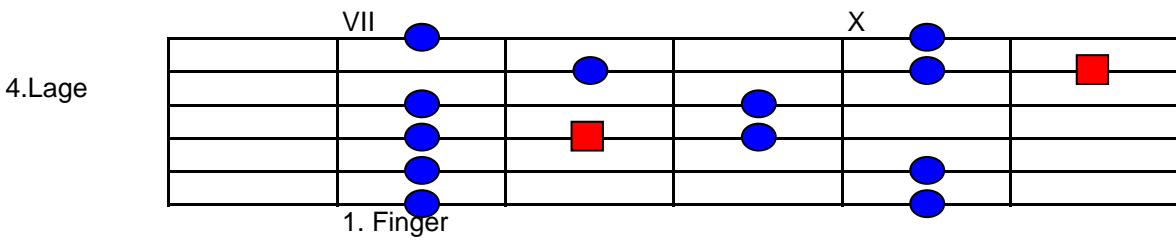
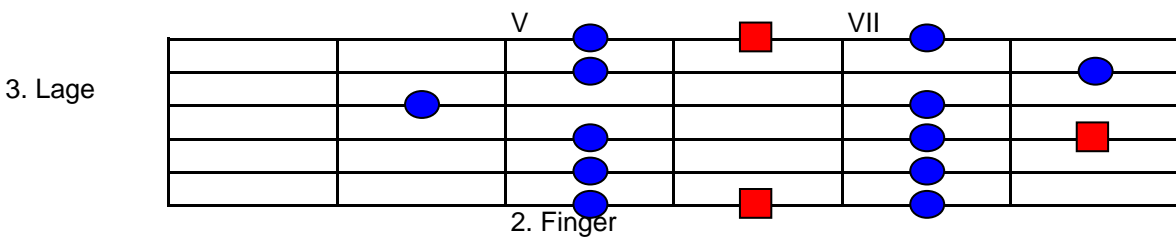
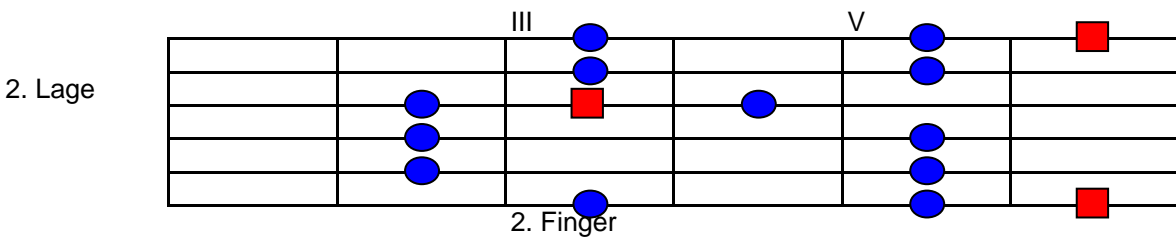
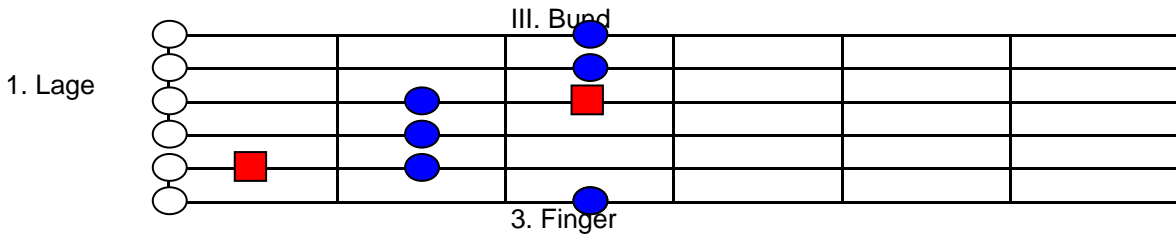
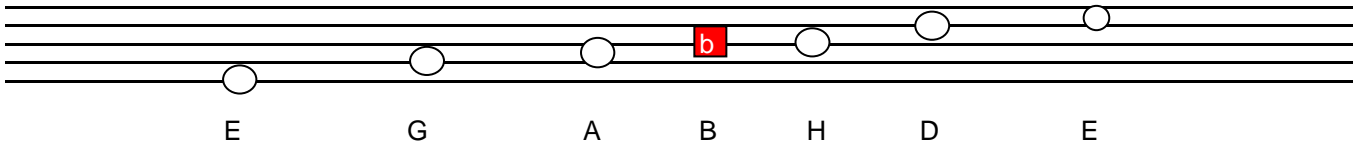
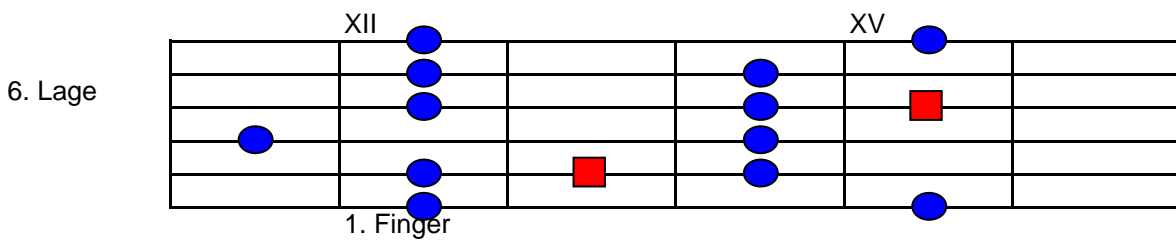
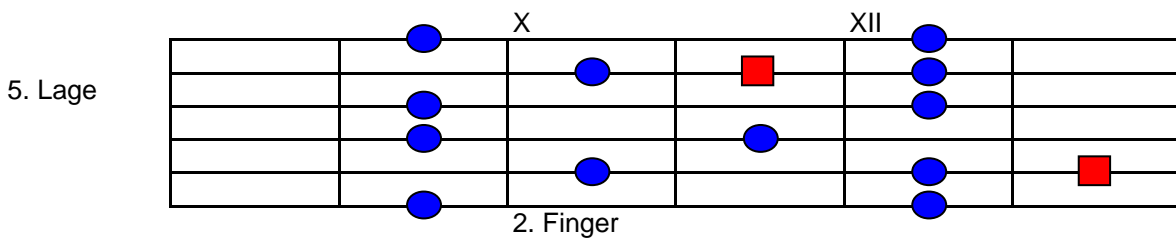
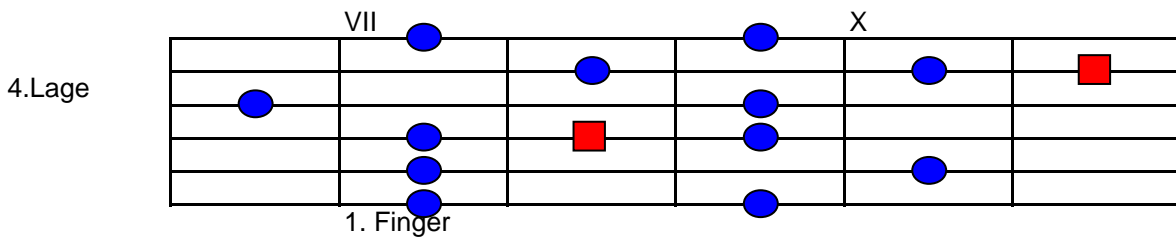
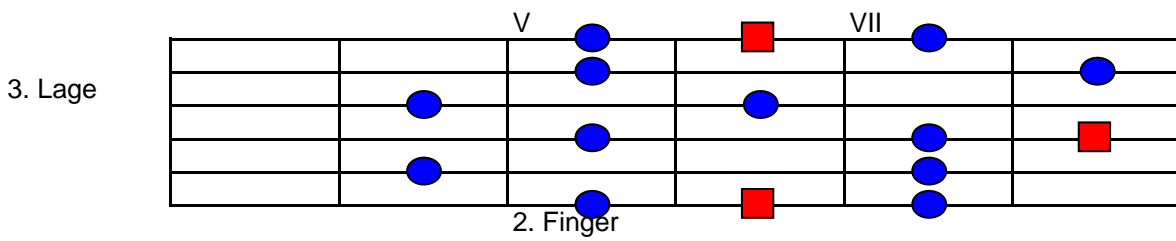
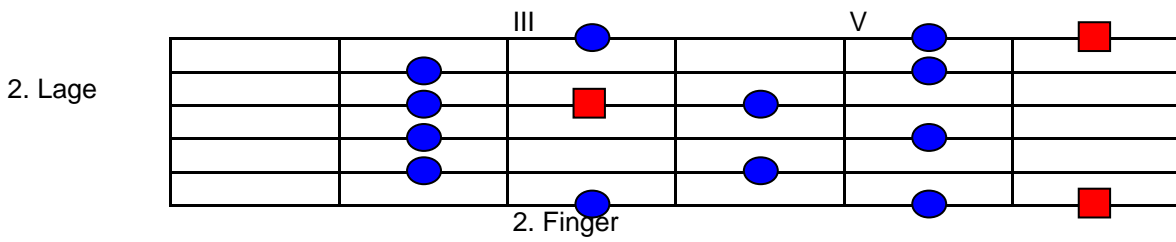
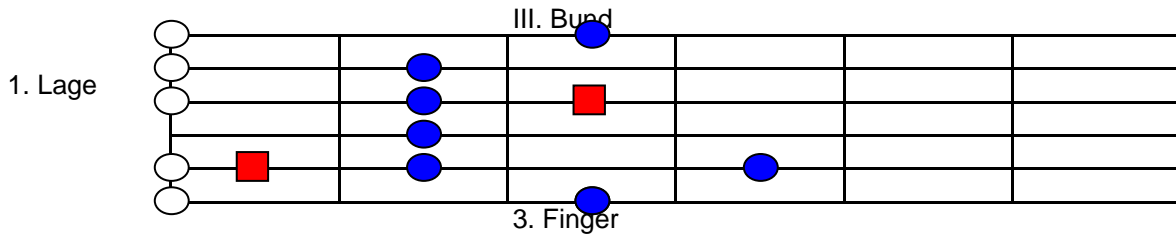
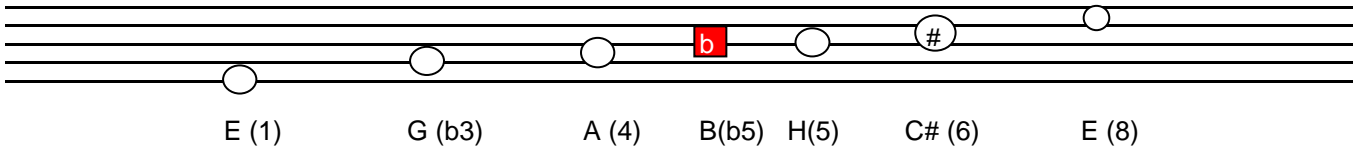


Em Pentatonik



Em Penta b5 ■ blue Note ( b5 )



Em Penta b5/6      ■ blue Note ( b5 )

# Blues in „E“

Gitarre

4

7

10

hier ein Beispiel mit der Moll Penta b5 + gr. 6  
jede der hier aufnotierten Pentatonik besteht aus  
Grundton, kl.Terz, Quarte, kl.Quinte, gr. Quinte, gr. Sexte und Oktave

Wendet nun diese Penta`s an um z.B. über diese Bluesform zu improvisieren.  
Um das bei sämtlichen Dominant Sept Akkorden anwenden zu können  
merke man sich folgendes:

vom jedem Dominant Sept Akkord aus einfach eine Quinte höher denken  
und die Moll Penta b5/6 spielen - fertig.