

Harmonisch Moll System

A-harmonisch-moll 1.Stufe Amj7

1 2 b3 4 5 b6 j7 8

A musical staff in treble clef with a key signature of one flat (B-flat) and a time signature of 8/8. It contains eight eighth notes: A2, B2, B-flat3, C4, D4, E4, F-sharp4, and G4. The notes are labeled with numbers 1 through 8 below them.

B-lokrisch.13 2.Stufe Bm7b5

1 b2 b3 4 b5 6 7 8

A musical staff in treble clef with a key signature of two flats (B-flat and E-flat) and a time signature of 8/8. It contains eight eighth notes: B2, B-flat2, B-flat3, C4, C-flat4, D4, E4, and D4. The notes are labeled with numbers 1 through 8 below them.

C-ionisch.#5 3.Stufe Cj7#5

1 2 3 4 #5 6 j7 8

A musical staff in treble clef with a key signature of one sharp (F-sharp) and a time signature of 8/8. It contains eight eighth notes: C4, D4, E4, F-sharp4, F-sharp4, G4, A4, and G4. The notes are labeled with numbers 1 through 8 below them.

D-dorisch#11 4.Stufe Dm7

1 2 b3 #4 5 6 7 8

A musical staff in treble clef with a key signature of two sharps (F-sharp and C-sharp) and a time signature of 8/8. It contains eight eighth notes: D4, E4, F-flat4, F-sharp4, G4, A4, B4, and A4. The notes are labeled with numbers 1 through 8 below them.

E-phrygisch.Dur 5.Stufe E7

1 b2 3 4 5 b6 7 8

A musical staff in treble clef with a key signature of one sharp (F-sharp) and a time signature of 8/8. It contains eight eighth notes: E4, F-flat4, F-sharp4, G4, A4, B-flat4, C4, and B4. The notes are labeled with numbers 1 through 8 below them.

F-lydisch#9 6.Stufe Fj7

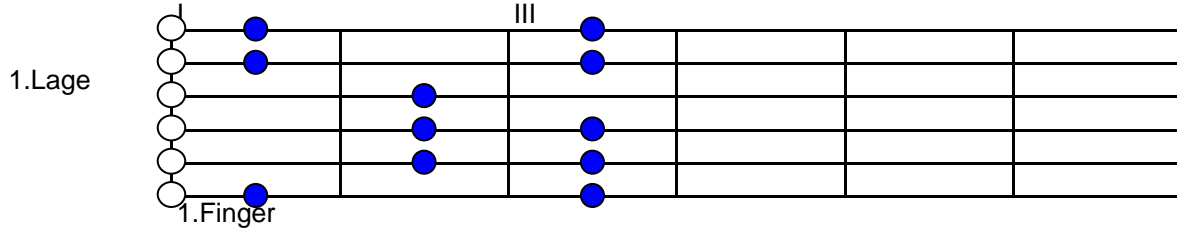
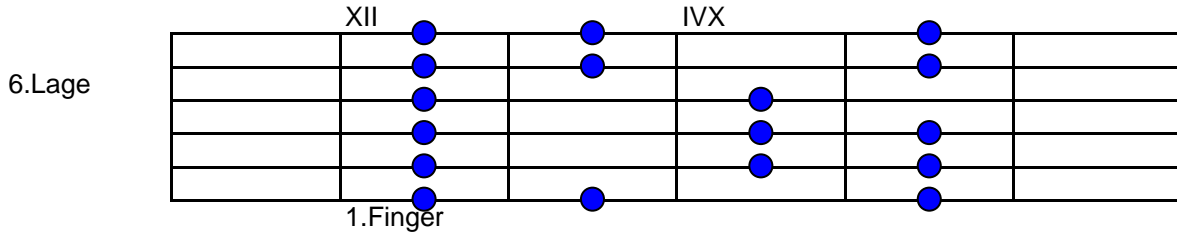
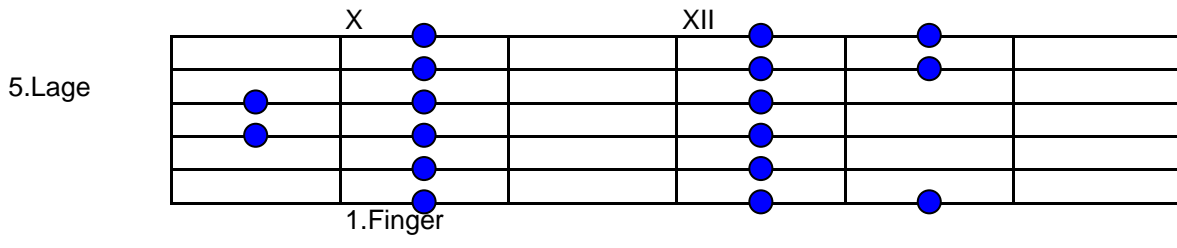
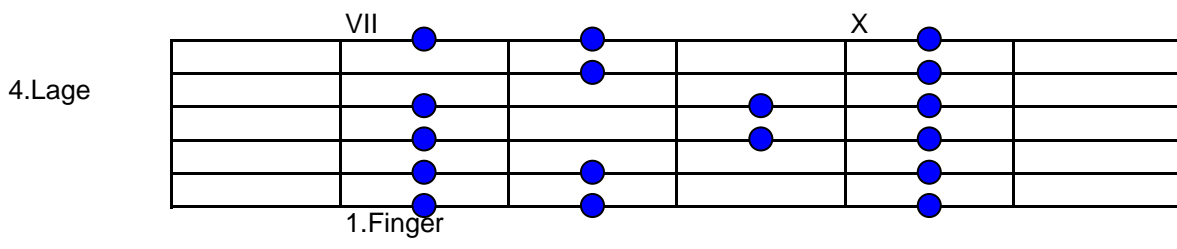
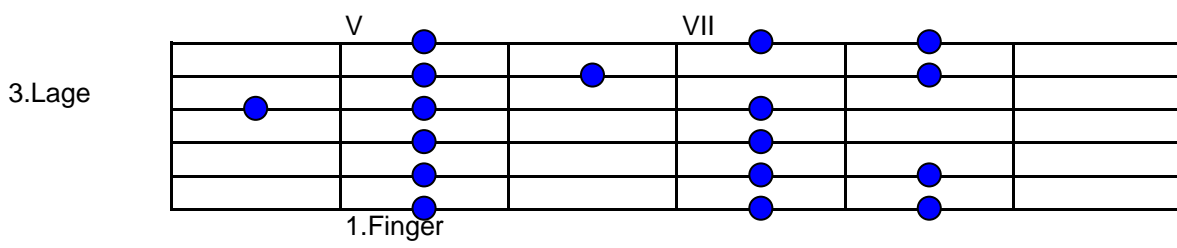
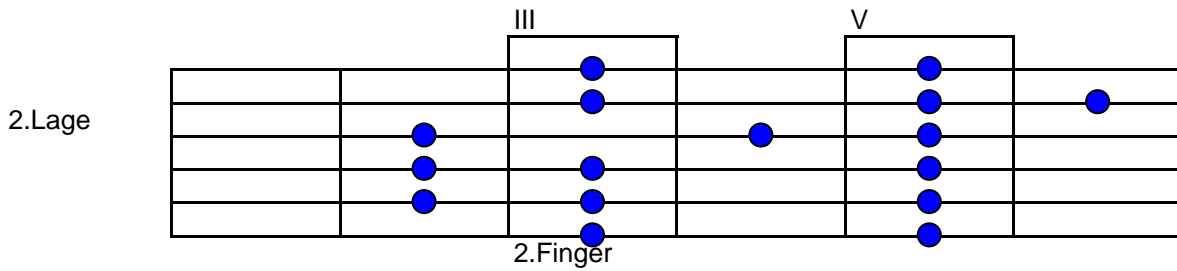
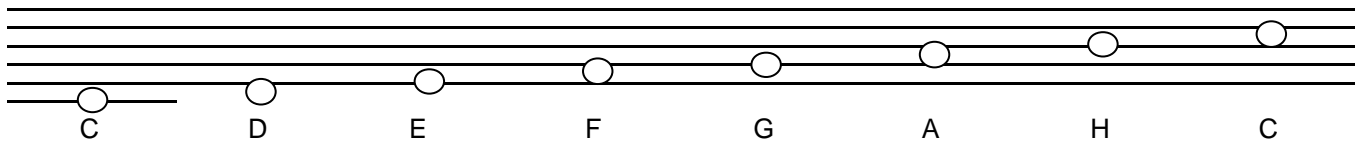
1 #2 3 #4 5 6 j7 8

A musical staff in treble clef with a key signature of two sharps (F-sharp and C-sharp) and a time signature of 8/8. It contains eight eighth notes: F4, F-sharp4, G4, G-sharp4, A4, B4, C4, and B4. The notes are labeled with numbers 1 through 8 below them.

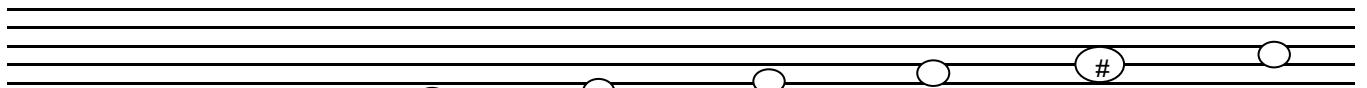
G#-harm.vermindert 7.Stufe G#°

1 b2 b3 b4 b5 b6 b7 8

A musical staff in treble clef with a key signature of two sharps (F-sharp and C-sharp) and a time signature of 8/8. It contains eight eighth notes: G-sharp4, A4, B-flat4, C-flat4, D-flat4, E-flat4, F-flat4, and G-sharp4. The notes are labeled with numbers 1 through 8 below them.



C Dur Tonleiter, 6 Lagen



1.Lage

I III

1.Finger

3.Lage

IV VII

1.Finger

4. Lage

VII X

1.Finger

2.Lage

I III V

3.Finger

5.Lage

IX X XII

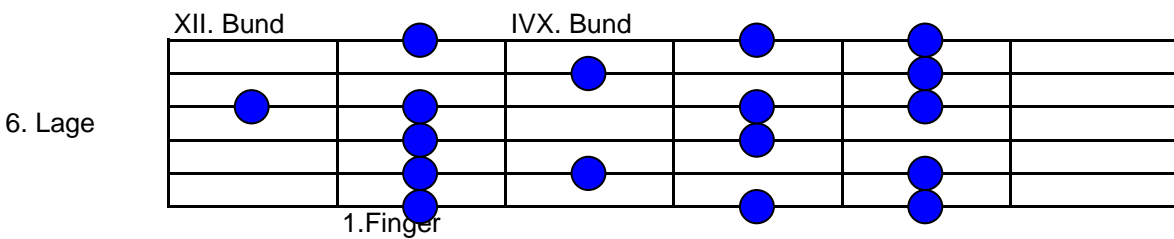
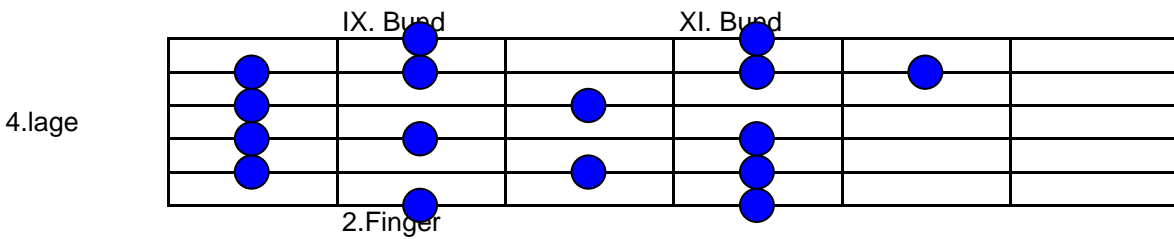
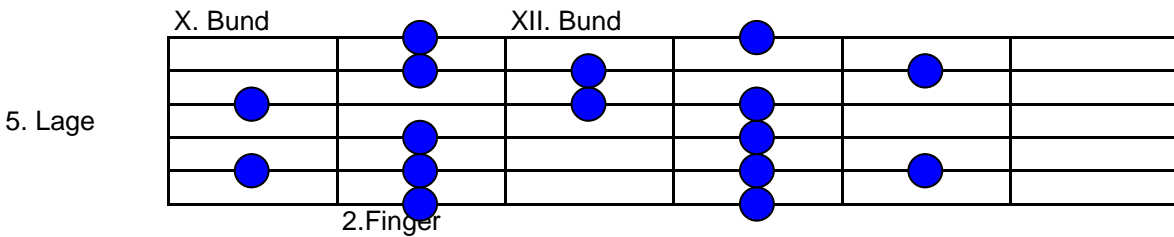
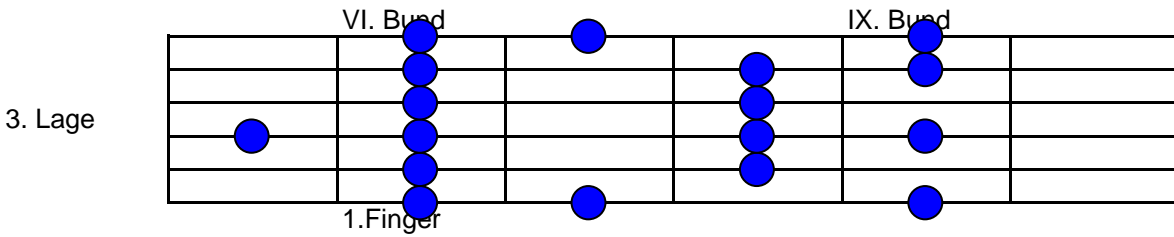
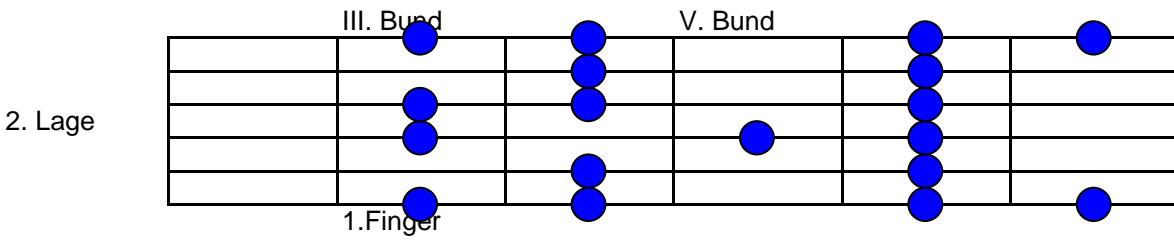
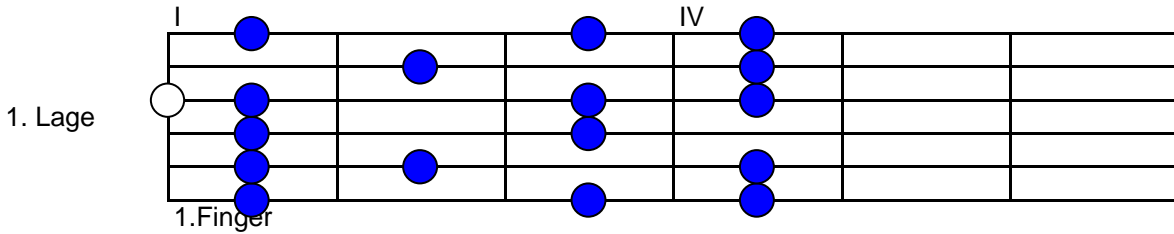
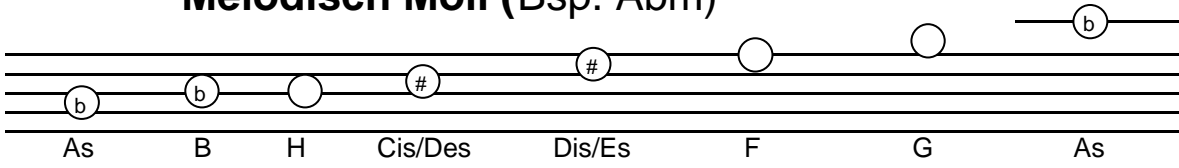
6.Lage

XI XII XV

2.Finger

Am Harmonisch = Amj7, Hm7b5, Cj7#5, Dm7, E7b9, Fj7, G#o

Melodisch Moll (Bsp. Abm)



Ab Melodisch : Abmj7, Bbm7, Hj7#5, C#7, D#7, Fm7b5, Gm7b5/G7alt.

3 Haupt Scalen

Stufen Ionisch Dur Melodisch moll Harmonisch moll

I	Ionisch	Aeolisch 6 j7	Harm. Moll
II	Dorisch	Dorisch b9	Lokrisch 13
III	Phrygisch	Lydisch #5	Ionisch #5
IV	Lydisch	Mixo #11	Dorisch # 11
V	Mixolydisch	Mixo b13	Phrygisch Dur
VI	Aeolisch	Aeolisch b5	Lydisch # 9
VII	Lokrisch	Alteriert	Harm. Verm.

Ionisches System - C Dur Tonleiter und deren Stufen

C - ionisch, 1. Stufe Cj7 Tonika (T)

1 2/9 3 4/11 5 6/13 j7 8

D - dorisch, 2. Stufe Dm7 Subdominantparallele (Sp)

1 2/9 b3 4/11 5 6/13 7 8

E - phrygisch, 3. Stufe Em7 Dominantparallele (DP)

1 b2/b9 b3 4/11 5 b6/b13 7 8

F - lydisch, 4. Stufe Fj7 Subdominante (S)

1 2/9 3 #4/#11 5 6/13 j7 8

G - mixolydisch, 5. Stufe G7 Dominante (D)

1 2/9 3 4/11 5 6/13 7 8

A - äolisch, 6. Stufe Am7 Tonikaparallele (Tp)

1 2/9 b3 4/11 5 b6/b13 7 8

H - lokrisch, 7. Stufe Hm7b5 (halbvermindert)

1 b2/b9 b3 4 b5 b6/b13 7 8

Scales

[Composer]

Guitar

I ionisch (C Dur) Cj7/9/11/13 II dorisch (B Dur) Cm7/9/11/13

III phrygisch (As Dur) Cm7/b9/11/b13 IV lydisch (G Dur) Cj7/9/#11/13

V mixolydisch (F Dur) C7/9/11/13 VI äolisch (Es Dur) Cm7/9/11/b13

VII locrisch (Db Dur) Cm7b5/b9/11/b13 I äolisch 6 j7 (CMM) Cmj7/9/11/13

II dorisch b9 (BMM) Cm7/b9/11/13 III lydisch #5 (AMM) Cj7#5/9/#11/13

IV mixo#11 (GMM) C7/9/#11/13 V mixo b13 (FMM) C7/9/11/b13

VI äolisch b5 (EbMM) Cm7b5/9/11/b13 VII alteriert (DbMM)

Calt. I harmonisch Moll (CHM) Cmj7/9/11/b13

31 II Lokrisch13 (BHM) Cm7b5/b9/11/13 III ionisch#5 (AHM)

1 b2 b3 4 b5 6 7 8 1 2 3 4 #5 6 j7 8

34 Cj7#5/9/11/13 IV dorisch#11 (GHM) Cm7/9/#11/13

1 2 b3 #4 5 6 7 8 1 b2 3 4 5 b6 7 8 1 #2 3 #4 5 6 j7 8

37 V phrygisch Dur (FHM) C7/b9/11/b13 VI lydisch #9 (EHM) Cj7#9/#11/13

1 b2 3 4 5 b6 7 8 1 #2 3 #4 5 6 j7 8

41 VII harmonisch vermindert (DbHM/C#HM) Co

1 b2 b3 b4 b5 b6 b7 8